

# RCE

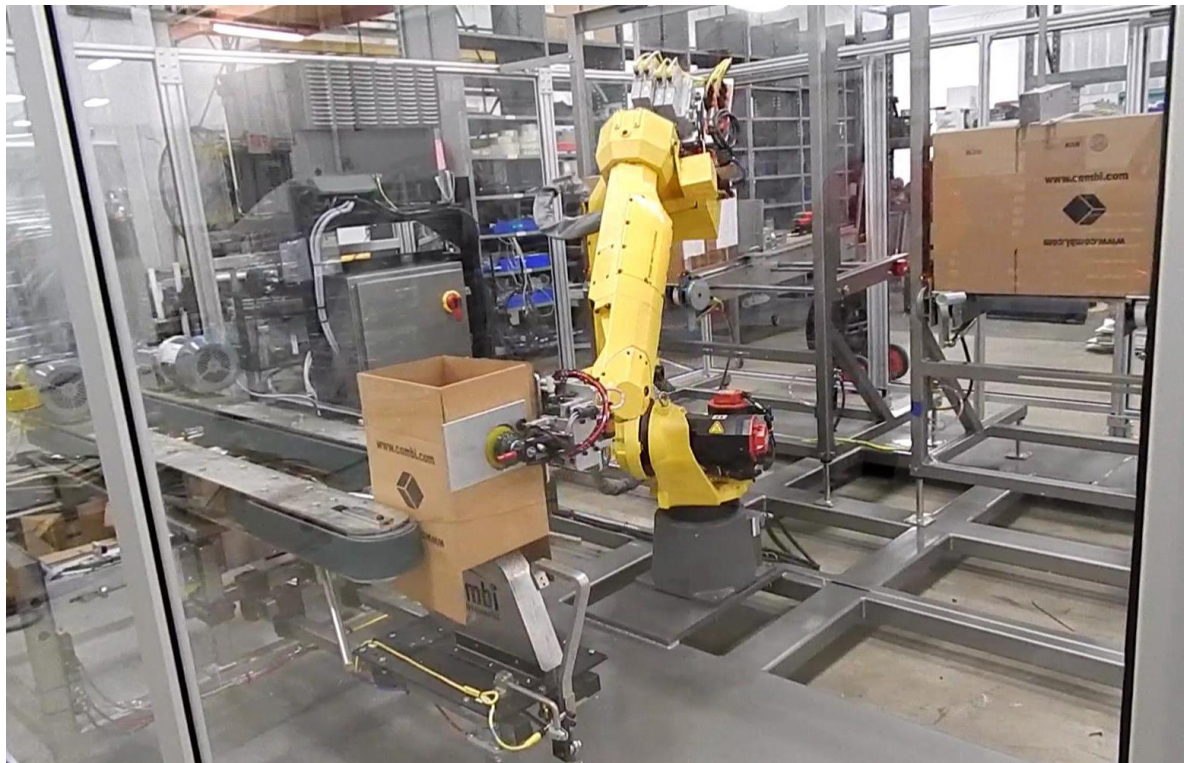
## ROBOTIC RANDOM CASE ERECTOR



The RCE Robotic Random Case Erector combines a FANUC M20iA/20 6-axis robot with multiple case magazines and a bottom flap folder with integrated 3M™ tape head. The FANUC robot has a flexible end of arm tool to pick and erect multiple case sizes on demand, eliminating costly changeover downtime and the floor space consumed by multiple case erectors. The standard system features four Combi powered case magazines, accommodating four different case sizes.

### RANDOM CASE ERECTOR INCLUDES:

- FANUC M20iA/20 6-axis Robot
- Flexible End of Arm Tooling (EOAT) with Vacuum and Dropped Case Detection
- Four powered case magazines
- Bottom Flap Folder with 3M™ Tapehead
- Allen-Bradley™ PanelView™ Plus 1000 Touchscreen
- Fixed Robot Base, anchored to floor
- Programming for Robot, PLC/PMC, HMI and Vision
- Robot Perimeter Barrier Guarding with Safety Interlocking Doors
- On-Site Training and Support



# RCE RANDOM CASE ERECTOR

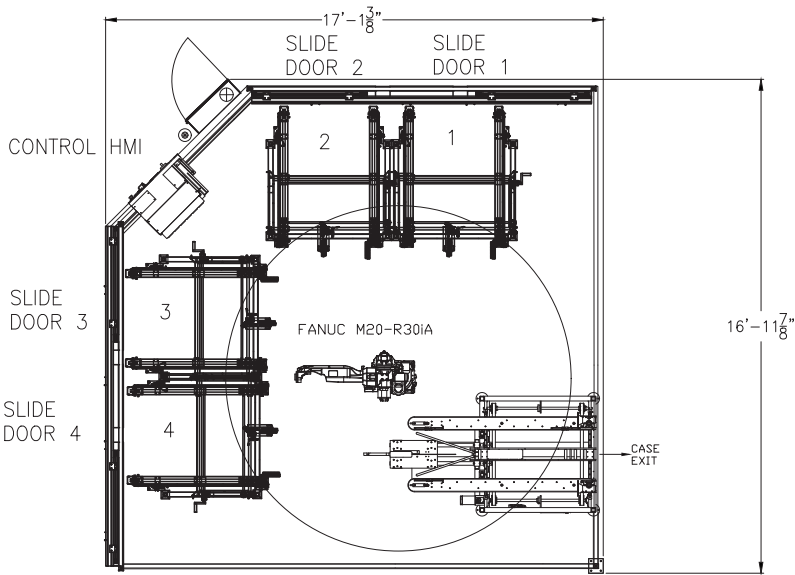
## SEQUENCE OF OPERATION:

Flat cases stand vertically in each magazine. On demand, the robot extends and, using vacuum, extracts a case from the appropriate magazine. The case is then formed using a squaring arm integrated in the end of arm tooling. The robot moves the erected case to the side belts where the flaps are closed and sealed by a 3M™ tapehead.



MODEL	CASE SIZE MIN (LXWXH)	CASE SIZE MAX (LXWXH)	SPEED: CPM
RCE	8 x 6 x 5" (203x152x127mm)	20 x 16 x 18" (508x406x457mm)	9

DISTRIBUTED BY:



6299 Dressler Rd NW North Canton, OH 44720 USA  
Phone: 1-800-521-9072 [www.combi.com](http://www.combi.com)

© 2018 Combi Packaging Systems LLC, a joint venture with 3M™ and Maillis Group