

2-EZ[®]XL SERIES

CASE ERECTOR/BOTTOM TAPER - LARGE CASES



2-EZ[®]XL
For Large Cases

Combi Packaging System's heavy duty side belt drive case erectors form and bottom seal large and extra large cases at speeds up to 15 cases per minute. These machines are built for optimal durability, reliability and value. Engineered with the industry's strongest frame (lifetime warranty) for the most demanding 3-shift environments, the 2-EZ[®]XL, 2-EZ[®]XL HS, and 2-EZ[®]XXL can readily integrate into your existing line. Combi's user-friendly EZ-load walk-in case magazines and quick changeover system are standard features. These dependable case erectors will provide years of service and can form and seal the widest variety of large cases, from single wall to triple wall corrugated.

2-EZ[®]XL SERIES STANDARD FEATURES:

- Large case capabilities up to 15 cases per minute
- EZ Load walk-in 50" powered case magazine
- Heavy-duty welded steel frame with lifetime guarantee
- 3M[™] Accuglide[™] tape head
- Allen-Bradley[™] electrical controls and operator interface
- Dual belt driven (2-EZ[®]XL and 2-EZ[®]XXL) or servo driven (2-EZ[®]XL HS) carriage assembly
- Self-cleaning vacuum system with air purge
- Hinged case hold down plate
- Right hand or left hand execution

2-EZ[®]XL SERIES

DESIGNED TO PERFORM:

The flat case blank stands vertically in the easy to load, walk-in case magazine. The case blank is extracted from the magazine with vacuum cups and formed by a retracting squaring arm. The rear minor flap is rotated 90°. The case is then transferred into the dual belt drives where it is transported across the tape head and is bottom sealed with a strip of pressure sensitive tape.

OPTIONS:

- Auto-adjust changeover package
- Hot melt glue closure
- Heavy duty locking casters
- Low Case Supply Alarm
- Low Tape/No Tape Alarm Kit
- 3" and 6" Wide 3M[™] Accuglide[™] tape heads (model and speed dependent)
- Spare parts kit
- Stainless steel framework
- NEMA 4 water wash down

ELECTRICAL SERVICE:

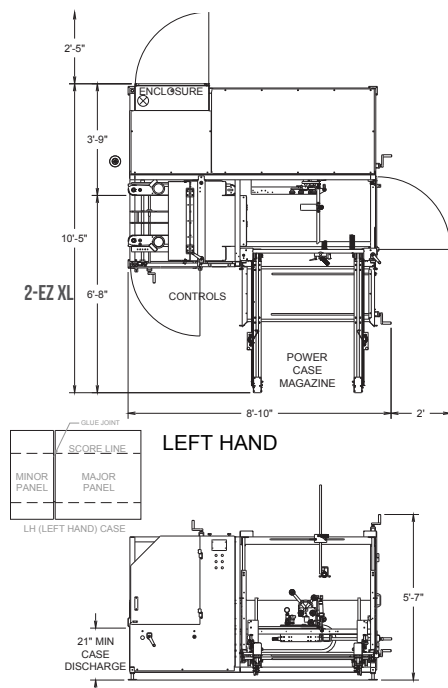
115 volt/1ph/20A
240 volt/3ph/20A



Combi's exclusive hinged case hold down plate allows for easy tapehead removal.

MODEL	CASE SIZE MIN (LXWXH)	CASE SIZE MAX (LXWXH)	SPEED: CPM*
2-EZ [™] XL	13 x 10 x 6" (330x254x152mm)	24 x 20 x 18" (610x508x457mm)	10
2-EZ [™] XL HS	13 x 10 x 6" (330x254x152mm)	24 x 20 x 18" (610x508x457cm)	15
2-EZ [™] XXL	21 x 15 x 9" (533x381x229mm)	32 x 26 x 30" (813x660x762mm)	8
2-EZ [™] XXL HS	21 x 15 x 9" (533x381x229mm)	32 x 26 x 30" (813x660x762mm)	12

*Speeds are case size dependent



DISTRIBUTED BY:

COMBI
PACKAGING SYSTEMS LLC

6299 Dressler Rd NW North Canton, OH 44720

Phone: 1-800-521-9072 www.combi.com

© 2018 Combi Packaging Systems LLC, a joint venture with 3M[™] and Maillis Group