

PNEUMATIC STRAPPING TOOL WITH SEAL FOR (STEEL) STRAP
FLAT AND ROUND SURFACE

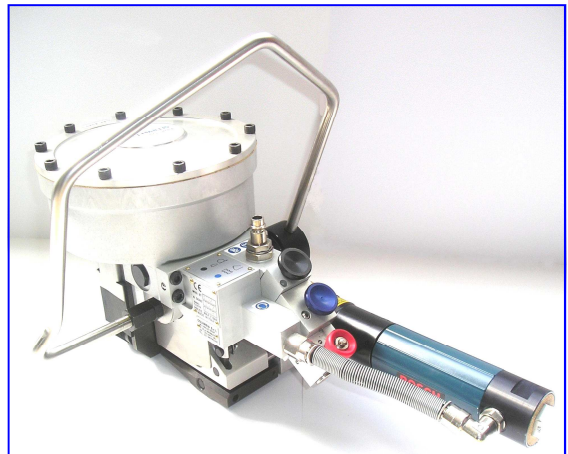
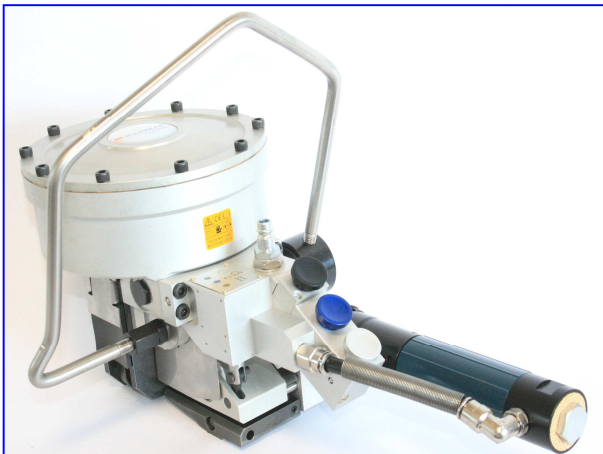
TECHNICAL DATA / APPLICATIONS :

Powerfull and reliable strapping tool for use in industrial heavy duty applications. Available in three different sizes of strap, 3/4"(19mm) 1"(25mm) 1-1/4"(32mm). Two model versions: 3 button model (STANDARD) and 2 button model with a STOP button.

Package type	Flat, Round and Irregular surfaces	
Strap type: High Tensile	High Tensile Rmax=1100N/mm2	
Strap Width	From 3/4"- 1-1/4" (19mm - 32mm)	
Strap thickness Bright—blue	Rmax= 850 N/mm2	From .024"- .039" (0.6mm - 1mm)
Strap thickness high tensile	Rmax= 1100 N/mm2	From .025"- .031" (0.63mm - 0.8mm)
Max. Tension	Around 2000 lbf. (9000n)	
Air pressure and consumption	From 80 - 95 psi (5.5 - 6.5 bar) MAX	
Max. Tension speed	Around 19.5' min. (6mt / min)	
Joint type	Seal - Double Notches	
Seal type	Overlap 1-3/4" (45mm) min. length	
Weight	Around 22 lbs. (10 Kg)	

STSR 3 BUTTON MODEL

STSR 2 BUTTON MODEL



or

Manufactured by the M.J. Maillis Group

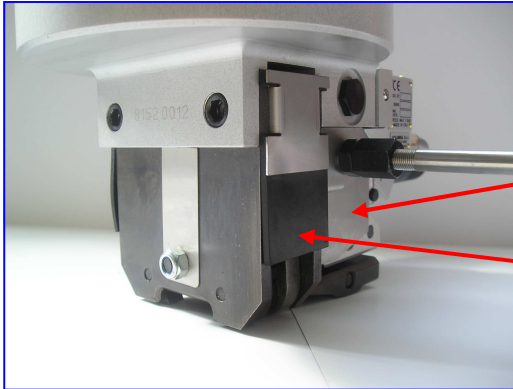
- * ALUMINIUM BUTTONS
- * MODERN DESIGN

MODEL	ORDER CODE	
STSR 19 3 BUTTON	102.190.130	STANDARD
STSR 25 3 BUTTON	102.250.130	STANDARD
STSR 32 3 BUTTON	102.320.130	STANDARD
STSR 19 2 BUTTON	120.190.130	ON REQ.
STSR 25 2 BUTTON	120.250.130	ON REQ.
STSR 32 2 BUTTON	120.320.130	ON REQ.

MAILLIS STRAPPING SYSTEMS—USA Inc. 404 Wall Street, Fountain Inn, SC 29644

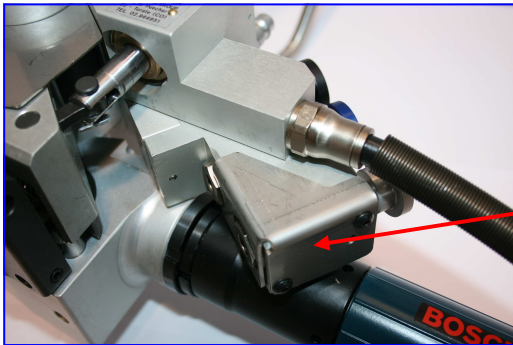
Phone: 877-962-4648 / Fax: 864-409-0367 / Web: maillisstrapping.com / E-mail: info@maillisstrapping.com

- NEW PROTECTION AND NEW ADAPTATION -
- MECHANICAL CHANGES TO IMPROVE EFFICIENCY -



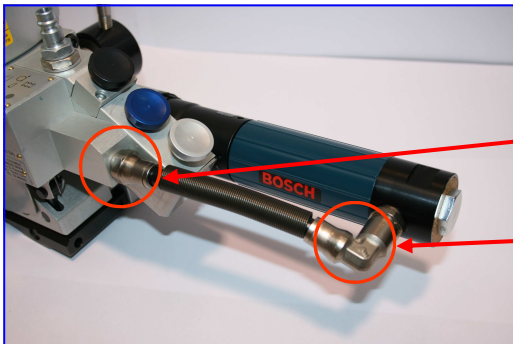
NEW SIDE COVER

NEW SAFETY COVER



LOWER PROTECTION VALVE

Protection of the valve from the steel strap or from accidental impact

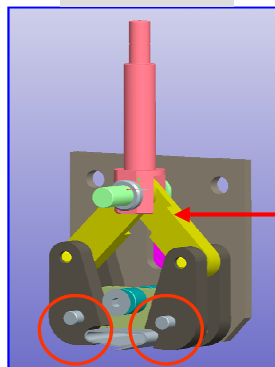
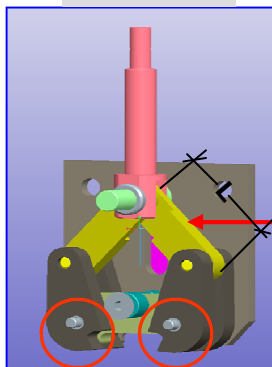


NEW METAL CONNECTORS

Stronger "PARKER" connectors

BEFORE

AFTER



MECHANICAL CHANGES IN THE JAW

Stronger PINS. Due to greater diameter

The SEALER LINKS are longer

The seal efficiency is higher

PINS and SEALER LINKS

PINS and SEALER LINKS