

# TF-2

## TRAY FORMER



The TF-2 is a perfect solution for forming and gluing die cut trays. The TF-2 is a simple, intelligent and very compact system that uses the same transport mechanism as our E-Series case erectors. The TF-2 features a low-profile, walk-in case magazine, and only 4 easy adjustments for tray changeover. The computer controlled glue application system applies glue precisely to the tabs at measurable intervals, creating a very square and securely glued tray every cycle.

### FEATURES:

- Heavy duty welded tubular steel framework with steel-it paint finish
- Easy changeover with pre-set mandrels and crank adjustments with digital scales
- Nordson ProBlue 4 hot melt glue system with precise temperature control and energy saving timer
- Easy load, walk-in tray magazine
- Self-cleaning vacuum system with air purge
- Self-cleaning glue guns keep glue patterns tight and on target
- Allen-Bradley™ electronic controls and operator interface
- Up to 10 different case size settings



# TF-2

## SEQUENCE OF OPERATION:

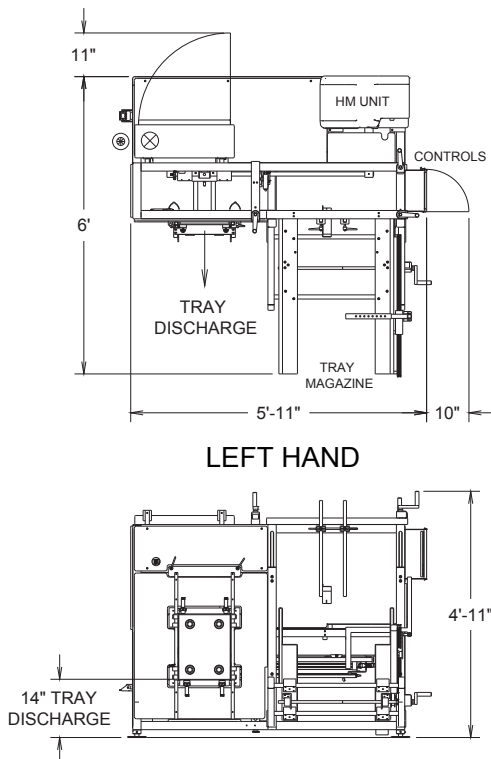
An operator loads flat tray blanks into the magazine. A vacuum arm extends to the tray blank, applies suction, retracts and then moves the flat tray horizontally past two glue heads, which apply a glue bead to the tray tabs. The glue application is controlled by magnetic position sensors which sense the tray position. After passing the glue heads, the transport arm extends and pushes the flat tray blank into a mandrel, forming the tray and folding the tabs. At this moment, four small cylinders extend into the mandrel, one at each corner of the newly formed tray, applying pressure and securing the glue seal. The vacuum arm then retracts and returns to the home position to pull another blank.



COMBI'S FORMING MANDRELS CREATE TIGHT SQUARE CORNERS

MODEL	TRAY SIZE MIN (L X W X H)	TRAY SIZE MAX (L X W X H)	BLANK SIZE MAX (L X W X H)	SPEED: TPM
TF-2	9.5 x 8.5 x 2"	24 x 16 x 5"	34 x 26"	10
TF-2+	9.5 x 8.5 x 2"	24 x 16 x 9"	42 x 34"	8

DISTRIBUTED BY:



6299 Dressler Rd NW North Canton, OH 44720  
 Phone: 1-800-521-9072 www.combi.com

© 2018 Combi Packaging Systems LLC, a joint venture with 3M™ and Maillis Group